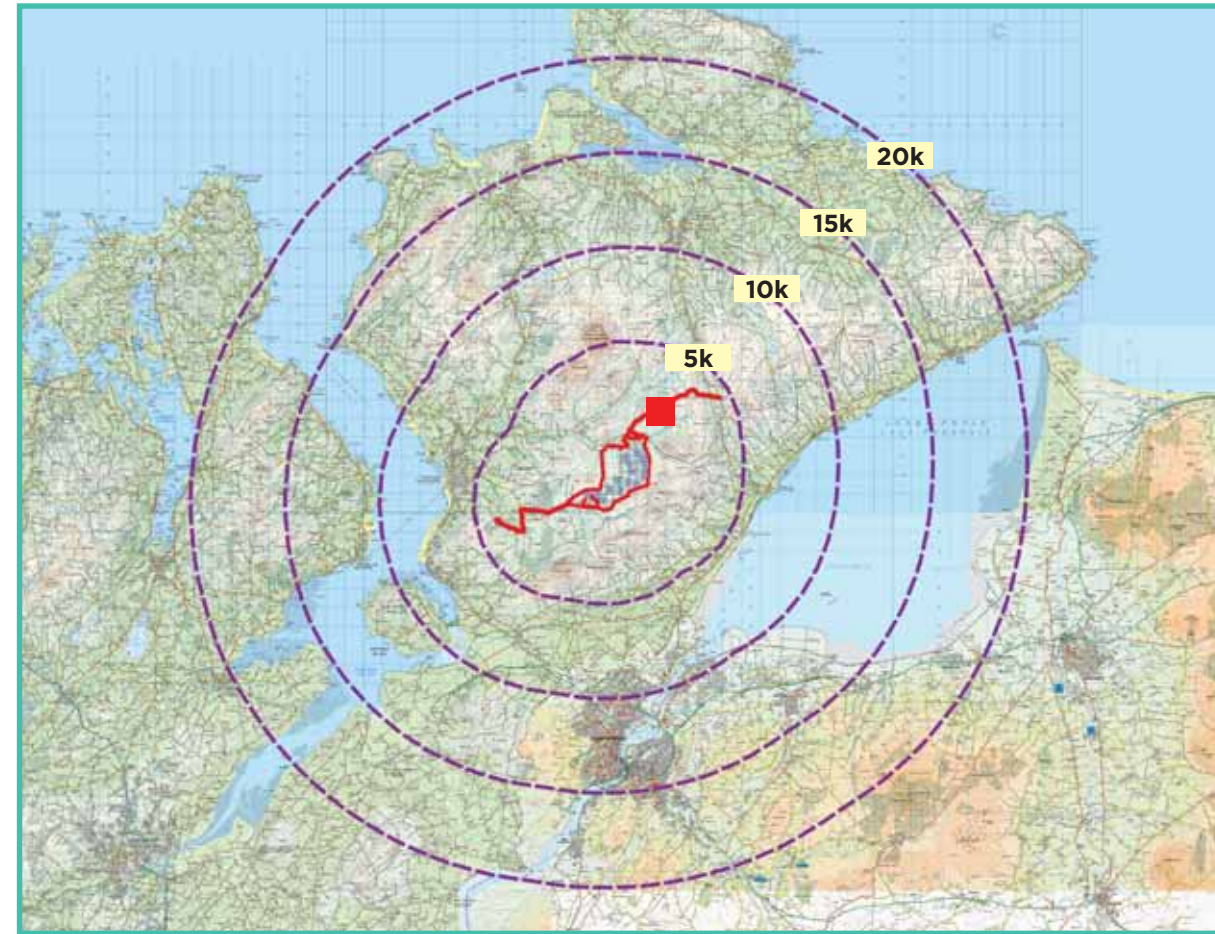


### Photomontage 3

**View Point:** View from the L-1731-3 local road in the townland of Carrowmore, approximately 2.69 km north-east of the of the nearest turbine.

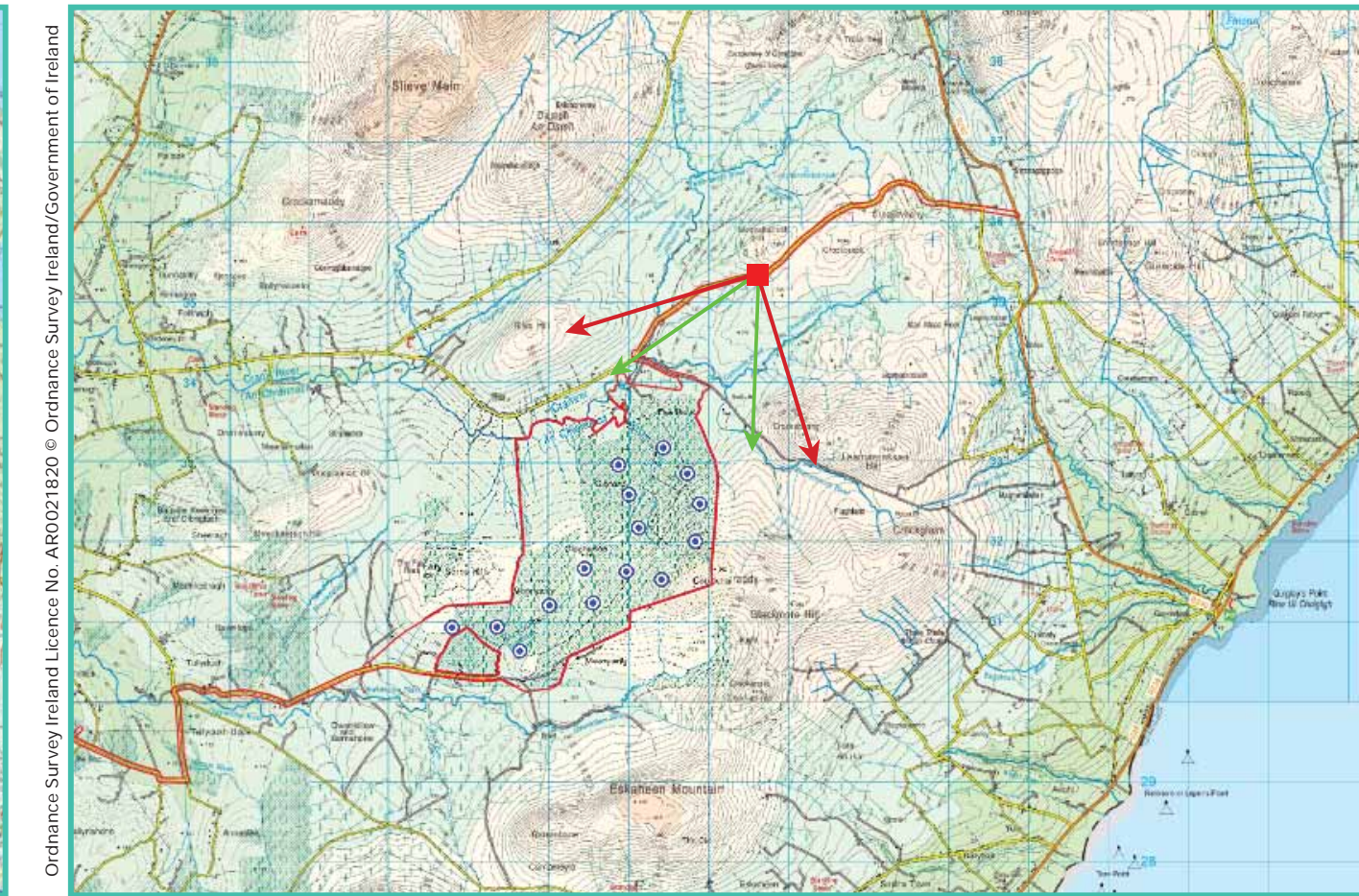
View point grid reference	(E) 645,569 (N) 935,311
Date of image taken	04.03.2020
Time of image taken	11:30am
View point elevation	187m
Angle of Views	90° / 53.5°
View Direction (Image Centre)	208°
Horizontal extent of proposed turbines	30°
Distance to nearest proposed turbine	2.45km (T4)
Number of proposed turbines visible	15/15
Turbine Hub Height	107m
Turbine Tip Height	173m
Turbine Rotor Diameter	132m
Camera	Canon EOS 600D with 1.5x sensor
Lens	35mm prime. Equivalent zoom range 52.5mm
Tripod	Manfrotto 190X extended to approx 1.65m.
Map Licence	©Copyright of Ordnance Survey Ireland. All Rights Reserved. License No: AR 0021820



View point relative to 20km radius.



View point relative to wind farm site (EIAR Site Boundary outlined in red).



Detail of view point location.

#### Map Legend

- Area shown in 90° view
- Area shown in 53.5° view
- View Point
- EIAR Site Boundary

#### Wireframe Legend

- Proposed Wind Farm in Blue
- Permitted Wind Farms in Pink
- Existing Wind Farms in Grey

#### Prepared by

MKO  
Planning & Environmental Consultants  
Tuam Road, Galway.

Tel: (091) 73 56 11  
E-mail: info@mkoireland.ie  
Website: www.mkoireland.ie



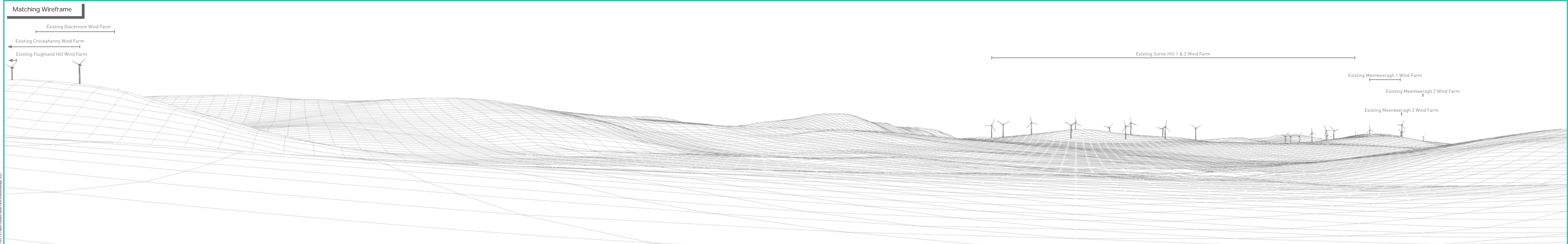
#### 90° View Extent

Key Image at 120°



#### 53.5° View Extent



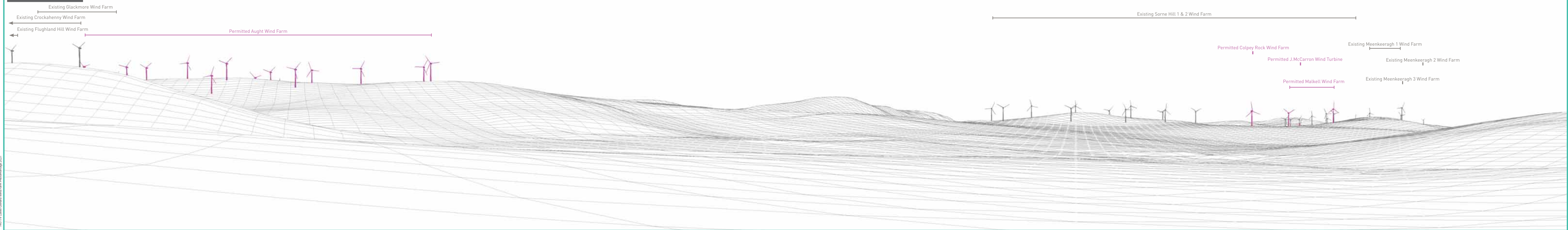




Do Nothing Scenario: Proposed development at Glenard does not proceed and permitted wind farms in the vicinity are constructed, view at 90°



Matching Wireframe



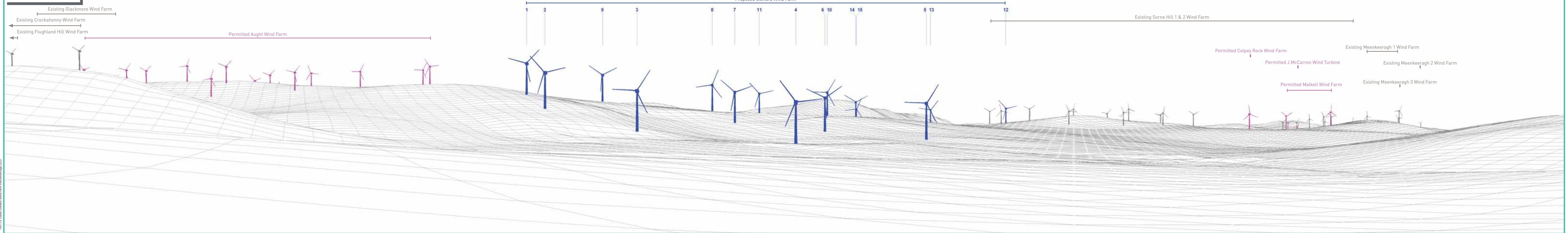
190114 Colpey Glenard Wind Farm Photomontage 2021



Proposed Photomontage with Cumulative at 90°



Matching Wireframe





Proposed Photomontage with Cumulative at 53.5°





Matching Wireframe

Proposed Glenard Wind Farm

Existing Sorne Hill 1 & 2 Wind Farm

Permitted Aught Wind Farm

1

2

9

3

8

7

11

4

6

10

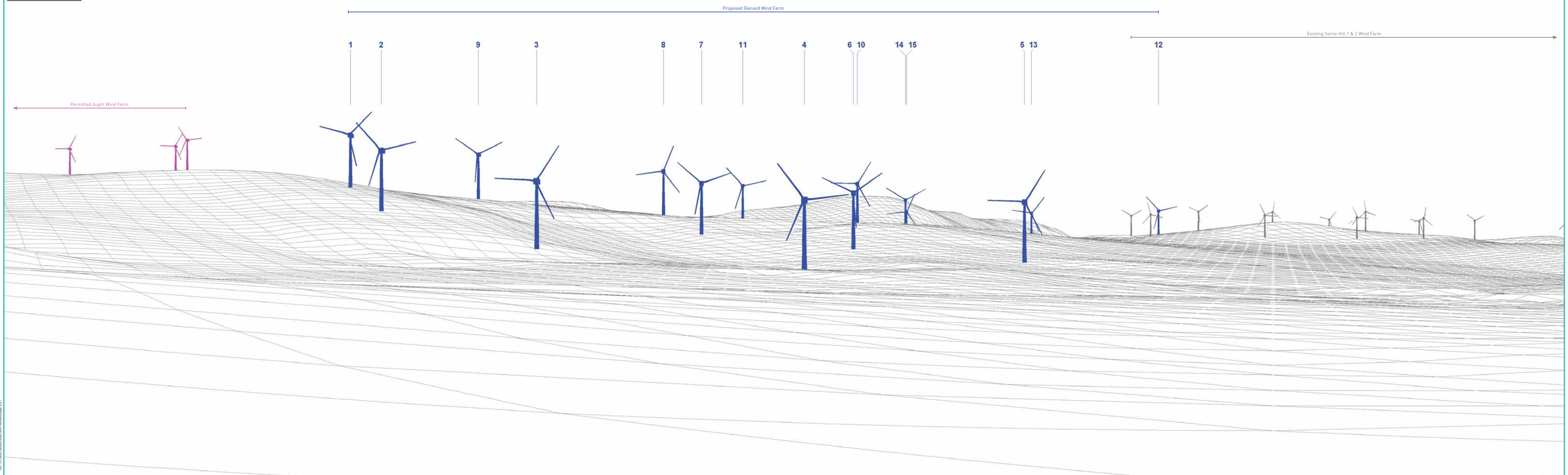
14

15

5

13

12



---

**VP3**

**Variation Minimum**

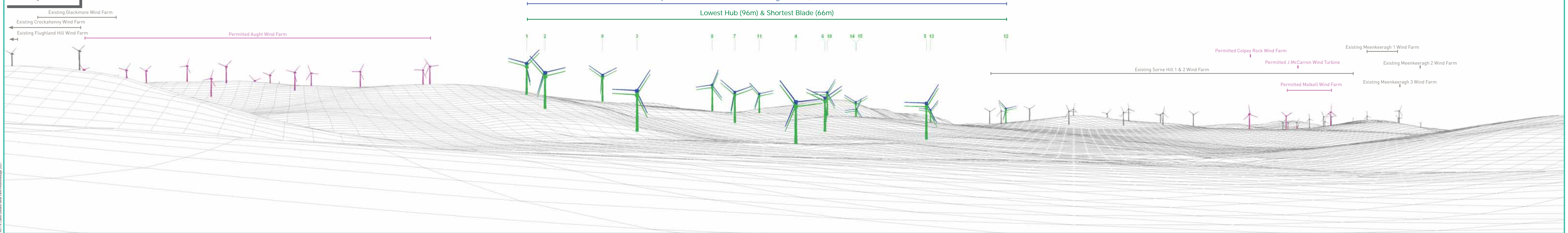
---



Variation Minimum with Cumulative Photomontage at 90°



Matching Wireframe



19/01/14 Collier Glenard Wind Farm Photomontage 2007



Variation Minimum with Cumulative at 53.5°





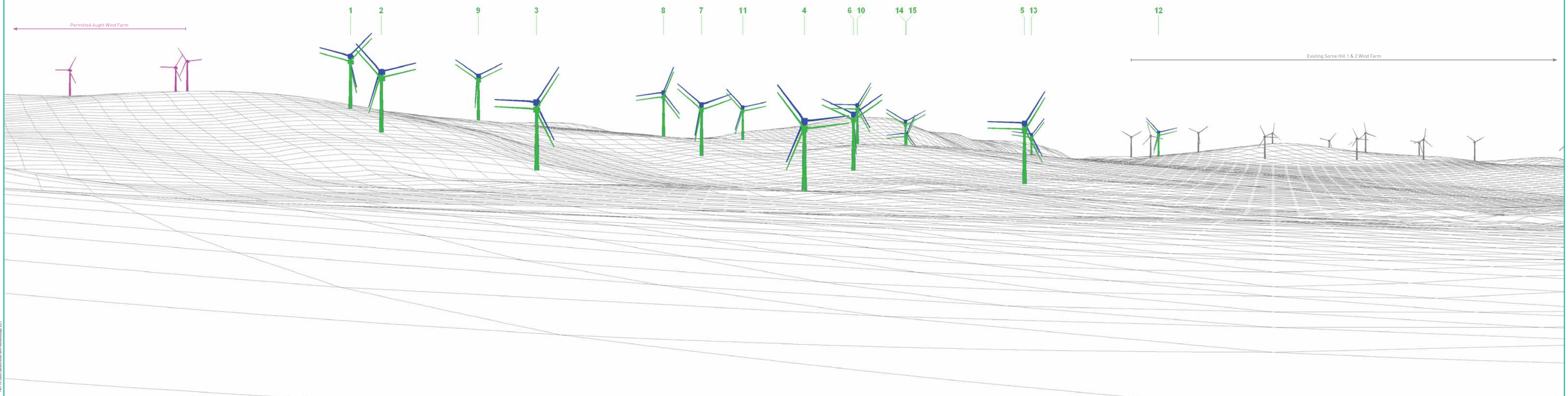
Matching Wireframe

Proposed Glenard Wind Farm - Hub Height: 107m, Rotor Diameter: 132m

Lowest Hub (96m) & Shortest Blade (66m)

Permitted Aught Wind Farm

Existing Sorne Hill 1 & 2 Wind Farm





---

**VP3**

**Variation Median**

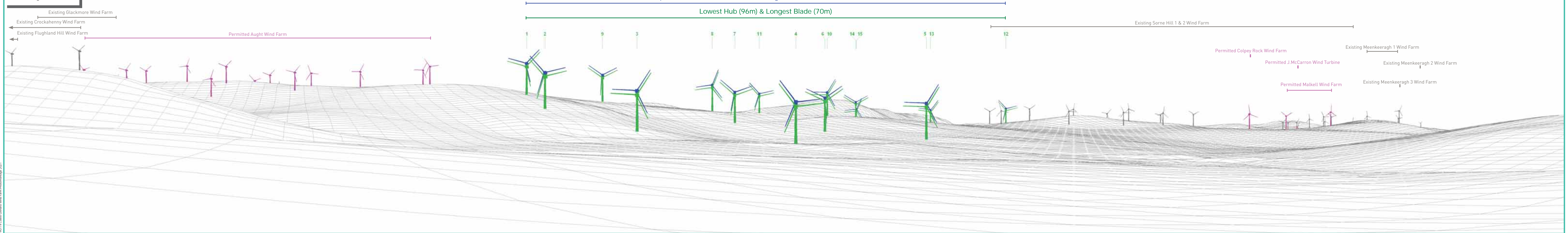
---



Variation Median with Cumulative Photomontage at 90°



Matching Wireframe





Variation Median with Cumulative at 53.5°





Matching Wireframe

Proposed Glenard Wind Farm - Hub Height: 107m, Rotor Diameter: 132m

Lowest Hub (96m) & Longest Blade (70m)

Existing Sorne Hill 1 & 2 Wind Farm

Permitted Aught Wind Farm

- 1
- 2
- 9
- 3
- 8
- 7
- 11
- 4
- 6 10
- 14 15
- 5 13
- 12

